



**ALL DOG RESCUE
- FINDING LIFE-LONG
HOMES FOR RESCUED
DOGS -**

alldogmn@yahoo.com
www.alldogmn.org

All Dog Rescue is an all volunteer, non-profit organization dedicated to helping needy dogs and finding them life-long homes.

At this time we are in need of donations, as a new organization we are looking for members, membership cost is \$25 per person. Your membership dollars will go directly to helping dogs in need.

Special Events Calendar

Adoption Day-

Come to Chuck & Don's in Bloomington on the 1st & 3rd Saturday of the month from 12-2pm.

The next adoption days are:

Sat. Feb 17th, 12-2pm

Sat March 3rd, 12-2pm

Sat March 17th, 12-2pm

All Dogs Speak

Volume 1, Issue 1

February 2007

Introducing All Dog Rescue!

All Dog Rescue is an all-volunteer, foster-home-based, no-kill rescue based in Minneapolis, MN. We take in dogs from shelters, strays picked up off the streets, and animals surrendered directly from individuals who can no longer care for them. With 4 million animals being euthanized every year in shelters around the country, the numbers of dogs needing our help is endless.

All Dog Rescue does not have a shelter. Instead, our dogs live in temporary foster homes where they are treated as canine family

members until they are adopted. We know our animals very well and can tell you about the dog's personality, whether they are housetrained, if they get along with other dogs, and what activities they enjoy. Our dogs are also seen by a veterinarian prior to adoption and are spayed/neutered, micro-chipped, heartworm tested, and current on all routine vaccinations. We will disclose any and all known health and behavioral issues to any potential adopters as our goal is to ensure happy dogs in appropriate forever homes, and this is best achieved with complete

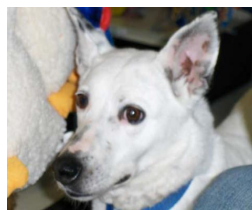
honesty. We have an extensive application process to make sure people adopt appropriate dogs for their homes.

We offer a lifetime commitment to the dogs in our program, and they will be lovingly cared for in their foster homes until they are adopted. If an adopter of an All Dog Rescue animal ever decides not to keep the dog, we will always take the dog back into our program.

Have you met Izzy?

Izzy is a beautiful 35 pound girl of unknown breed. Our best guess is corgi and Australian Cattle Dog. Izzy is doing wonderfully in her foster home, but life was not always easy for this girl. She spent the first 3-4 years of her life neglected as a backyard dog. She is

only now learning the joys of playing with toys and being loved.



Despite the rough past, Izzy is remarkably affectionate and appears fully house-trained. She does great in a crate, which is a safe

place for her. She will do best in a home without small children or very high energy dogs as she does get frightened by quick and unpredictable movements. But she loves the older dog in her foster home and enjoys following her foster parents around the house. She's a sweet, lovable girl eager to find her forever family.



Ten Tips for a Poison-Safe Household

These helpful tips were compiled

by:
 Jill A. Richardson,
 DVM.
 Veterinary Poison
 Information
 Specialist
 ASPCA National
 Animal Poison
 Control Center
 1717 Philo Road,
 Suite #36
 Urbana, IL 61801

1. Be aware of the plants you have in your house and in your pet's yard. The ingestion of azalea, oleander, mistletoe, sago palm, Easter lily, or yew plant material, by an animal, could be fatal.

2. When cleaning your house, never allow your pet access to the area where cleaning agents are used or stored. Cleaning agents have a variety of properties. Some may only cause a mild stomach upset, while others could cause severe burns of the tongue, mouth, and stomach.

3. When using rat or mouse baits, ant or roach traps, or snail and slug baits, place the products in areas that are inaccessible to your animals. Most baits contain sweet smelling inert ingredients, such as jelly, peanut butter, and sugars, which can be very attractive to your pet.

4. Never give your animal any medications unless under the direction of your veterinarian. Many medications that are used safely in humans can be deadly when used inappropriately. One extra strength acetaminophen tablet (500mg) can kill a seven-pound cat.

5. Keep all prescription and

over the counter drugs out of your pets' reach, preferably in closed cabinets. Pain killers, cold medicines, anti-cancer drugs, antidepressants, vitamins, and diet pills are common examples of human medication that could be potentially lethal even in small dosages. One regular strength ibuprofen (200mg) could cause stomach ulcers in a ten-pound dog.

6. Never leave chocolates unattended. Approximately one-half ounce or less of baking chocolate per pound body weight can cause problems. Even small amounts can cause pancreatic problems.

7. Many common household items have been shown to be lethal in certain species. Miscellaneous items that are highly toxic even in low quantities include pennies (high concentration of zinc), mothballs (contain naphthalene or paradichlorobenzene - one or two balls can be life threatening in most species), potpourri oils, fabric softener sheets, automatic dish detergents (contain cationic detergents which could cause corrosive lesions), batteries (contain acids or alkali which can also cause corrosive lesions), homemade play dough (contains high quantity of salt), winter heat source agents like hand or foot warmers (contain high levels of iron), cigarettes, coffee grounds, and alcoholic drinks.

8. All automotive products such as oil, gasoline, and antifreeze, should be stored in

areas away from pet access. As little as one teaspoon of antifreeze (ethylene glycol) can be deadly in a seven-pound cat and less than one tablespoon could be lethal to a 20-pound dog.

9. Before buying or using flea products on your pet or in your household, contact your veterinarian to discuss what types of flea products are recommended for your pet. Read ALL information before using a product on your animal or in your home. Always follow label instructions. When a product is labeled "for use in dogs only" this means that the product should NEVER be applied to cats or other pets. Also, when using a fogger or a house spray, make sure to remove all pets from the area for the time period specified on the container. If you are uncertain about the usage of any product, contact the manufacturer or your veterinarian to clarify the directions BEFORE use of the product.

When treating your lawn or garden with fertilizers, herbicides, or insecticides, always keep your animals away from the area until the area dries completely. Discuss usage of products with the manufacturer of the products to be used. Always store such products in an area that will ensure no possible pet exposure.

